

A book for.....

---



You will either be in Mrs Rogers' class.....



Or Mrs Tully's class



But when it is your choosing time, you can play in both classrooms!

Sometimes Mrs Stoeri-Smith learning time when he is not in the classroom.

These are the support staff that will be helping you with your playing and learning.



Mrs Castro



Mrs Mercer



Mrs Readings



Mrs Buxton

Sometimes the adults will be inside with you and sometimes they will be outside.

All of the adults will help you if you are hurt or sad.



What do the outside of the classrooms look like?



When you come through the gates, Mr Zeal's classroom is right in front of you and down the steps.

Just around the corner to your right, is Mrs Rogers' classroom



You can hang your coat up on your peg. It will have with your name on it. Your wellies can go on the welly shelf.



Book bags will go in your group box which will have your name on the front. You need to bring your book bag to school every day.





You can always use the toilet when you need to.

Remember to wash your hands with soap.



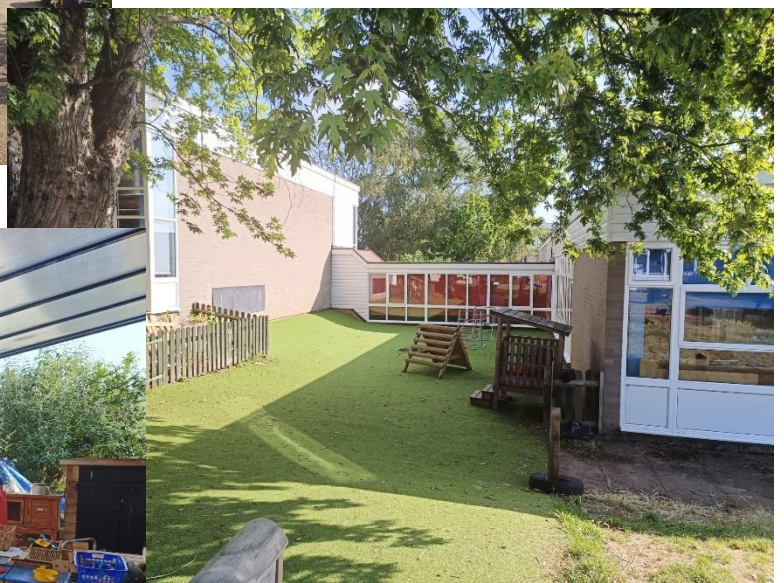
Sometimes your teacher will choose the learning that you will be doing, and sometimes you will choose what you would like to do. Following our classroom rules is very important, as it keeps everyone happy and safe.



# Inside



# Outside



Here are some resources that you can play with, but there will be lots more things too!



If you have a school dinner, the friendly cooks will serve you from 'The Lodge.' The play leaders will help you with your trays to sit down at a table. They can also help you with cutting up your food or opening any packets.



Here is where you will sit to eat your school dinner or home packed lunch....



Have a lovely summer and we will see you in September!

From Mrs Rogers and Mrs Tully